

Goldy For EDB to PST Converter User Manual Guide Version 3.0

1. Goldy For EDB to PST Converter

1.1 Introduction

1.2 Key Features

1.3 System Requirements

2. Installation and Uninstallation

2.1 Installation

2.2 Uninstallation

3. User Interface

3.1.1 Menu Bar

3.1.2 Option Menu

3.1.3 Help Menu

3.2 Tool Bar

4. Using Goldy For EDB to PST Converter

5. Purchase

6. Conclusion

7. Support

8. Copyright

About Goldy For EDB to PST Converter

A strong tool for recovering corrupt and unavailable EDB files is Goldy for EDB to PST Converter tools. It expertly handles the recovery of Exchange Server's private and public folders.

Goldy for EDB to PST Converter: Save the items to new or existing PST files after recovering mailboxes from corrupted Exchange database files. Even deleted items are recovered by the utility from highly damaged EDB files. Anyone can do the operation thanks to the user-friendly software's Interface. The tool also has a trial version that may be downloaded, installed, and used to your satisfaction.

- Saves specific EDB file data to an existing or brand-new PST file
- Search for EDB files on a certain system drive
- Has two sophisticated scanning settings for data in EDB files

Pre-requisites & System Requirements

- Pentium Processor
- Minimum 512 MB RAM (1 GB recommended)
- 512 MB of free hard disk space for Software installation

Supported Versions

- **Supported Operating Systems-** Supports Windows 11, Windows 10, Windows 8, Windows 7, Vista, XP **(32/64bit Version)**
- **Supported MS Outlook platforms-** Supports Outlook 2000 to 2021 - All Editions **(32/64bit Version)**

2. Install Goldy For EDB to PST Converter

2.1 Installation

Your step-by-step tutorial to installing Goldy For EDB to PST Converter Software:

To be able to seamlessly install Goldy For EDB to PST Converter Software on your computer, simply execute the steps given below:

- First and foremost, ensure that your host computer meets the minimum system requirements and has ample memory available.
- After that download Goldy For EDB to PST Converter software from the website: <http://www.goldytools.com>
- You would then need to double-click on the Goldy for EDB to PST Converter software installer.
- Simply, go through and follow the instructions as given on the screen. You would finally get to see the setup installation completion screen. Here, click on the Finish button which would then open the main screen of the Goldy for EDB to PST Converter.

2.2 Uninstallation

How to uninstall Goldy for EDB to PST Converter Software?

There are two simple ways of uninstalling Goldy for EDB to PST Converter software from your computer system:

- Option 1: By using the Windows Start menu.
- Option 2: By using the Control Panel.

Kindly note: Be cautious about the fact that the Goldy for EDB to PST Converter Software is not running in the background of your computer.

Uninstalling using the Windows Start menu

- Go to your computer desktop and click on the Start button from the Windows menu.
- Go to All Programs > Goldy for EDB to PST Converter > Uninstall Goldy for EDB to PST Converter.
- You would see a warning message confirming the uninstallation of the software on your computer screen. To confirm, click on the Yes button to Uninstall the Goldy for EDB to PST Converter.

You would then be able to successfully uninstall Goldy for EDB to PST Converter software from your computer system.

Uninstalling using the Control Panel option

- Go to your computer desktop and click on the Start Menu > Control Panel and then double click the Add or Remove Programs icon. Choose the Goldy for EDB to PST Converter and then click on Remove.
- You would then see a warning message confirming the uninstallation of Goldy for EDB to PST Converter Software.
- To confirm, simply click on the Yes button to uninstall the Goldy for EDB to PST Converter Software.

You would then be able to successfully uninstall Goldy for EDB to PST Converter software from your computer system.

Understanding the Menu Bar and Tool Bar

Menu Bar




The commands for Select EDB, Close EDBs, and Save to PST, Exit, Setting ,Help, Visit Software Home Page, About PST are managed through the Menu .



Option	Description

Select EDB	When you click this button, the add source wizard opens, allowing you to add edb sources
Close EDBs	This button can be used to close the EDB.
Save to PST	You can export more EDB mailboxes into the Outlook PST format by selecting this button
Exit	Choose this option if you wish to close the Software completely and exit
Setting	Provide a choice in advance Choose Show Deleted or Not, and Unicode or Non-Unicode options. Whether to export or copy something twice is up to you.
Help	Choose this option to open the User Help Manual Goldy for EDB to PST Converter Software
Visit Software Home Page	Choose this option to visit the software homepage on the website
About Goldy for EDB to PST	Choose this option to know the version and support information about the Software

Toolbar

The Goldy for EDB to PST Converter toolbar, which allows you to manage software features, is provided below.

Icon	Description
 Select EDB	Add EDB File to the Application
 Save to PST	Save PST to the Application
 Search	Searches selected Item

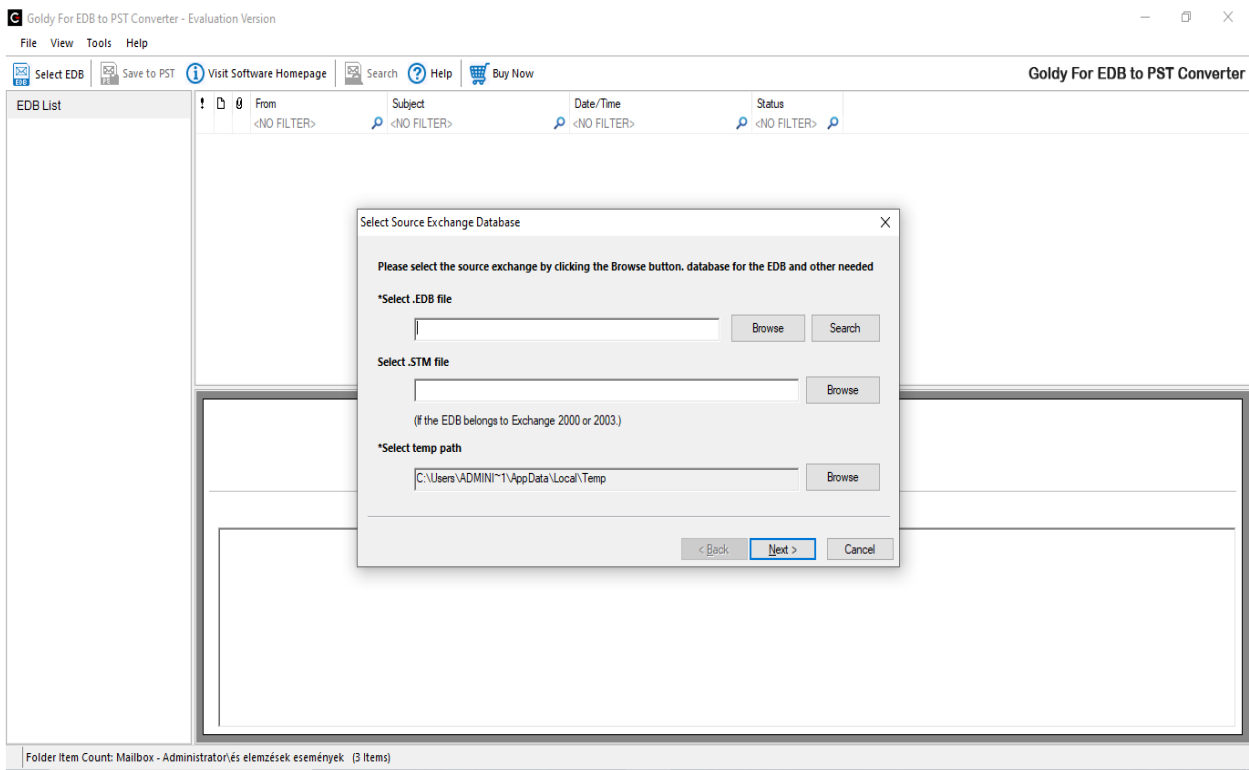
 Help	Choose this option to open the User Help Manual Goldy for EDB to PST Converter Software
 Buy Now	Click the Buy Online button if you wish to purchase the complete version of the software

Using the Software

EDB files can be easily converted to PST files. See how Goldy EDB to PST Converter Program works to convert EDB files to PST files quickly and easily.

Step 1: When you first run the software, you will get a Welcome screen similar to the one below

Choose the EDB file by browsing. If they are present, the paths for STM and Temp files are automatically filled in. Next, select the Next button.



4.1. Browse Source

Choose the scan mode from the available options. Choose Next.

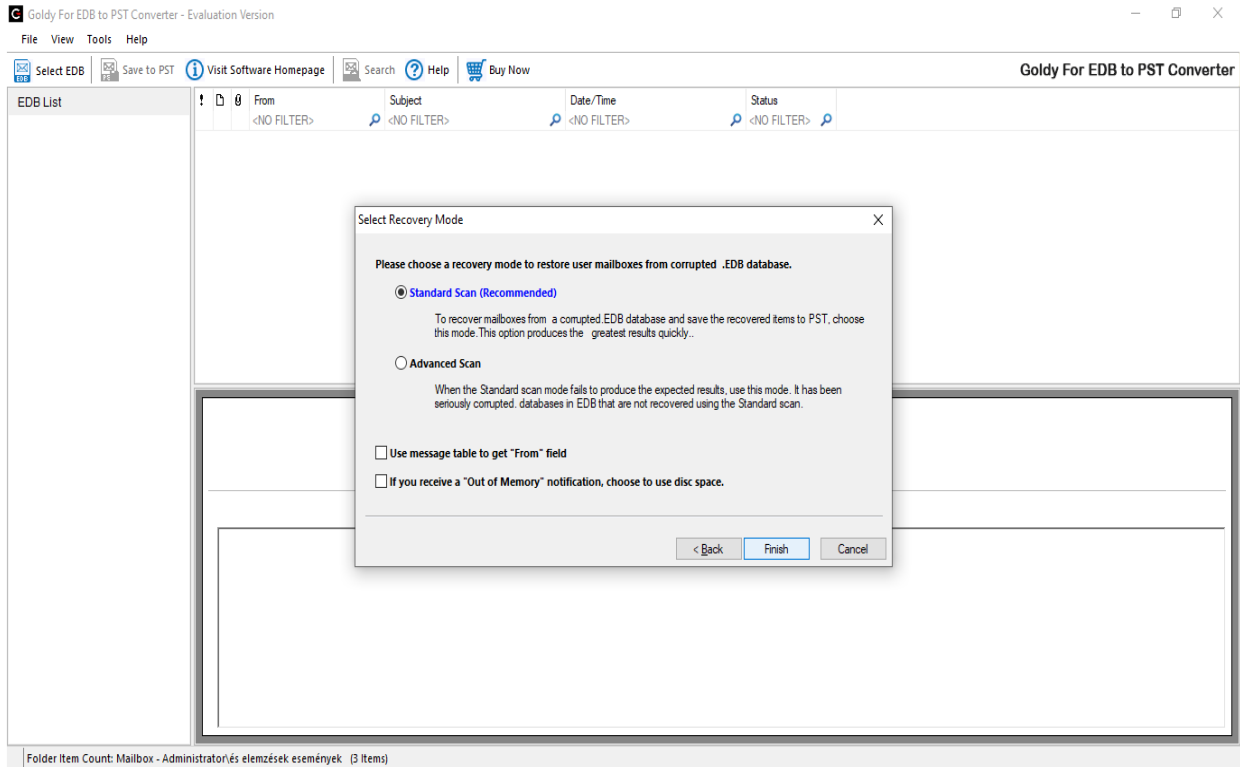


Figure 4.2

The process will be finished after you click the Finish button.

The Search option can be used to find the EDB file if its location is unknown.

Using Search Option:

1. In the Add Source Dialog Box, click the Search option.
2. In the Search EDB file Pop Up, click Browse to specify the location where you wish to search the EDB file.
3. On the Search EDB file Pop Up, select the Search option.

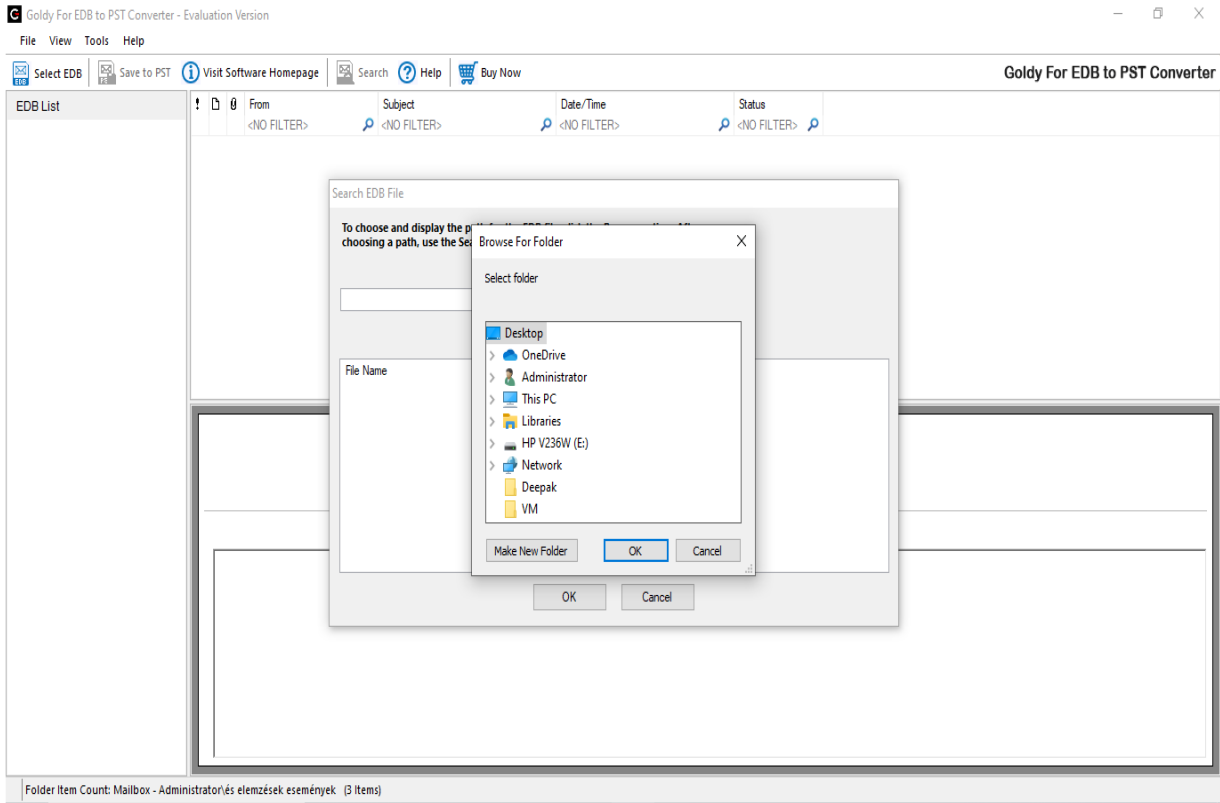


Figure 4.3 Search EDB File

All of the EDB files in the designated place are listed after the Search is finished.

4. After choosing the required File, press the "Ok" button.

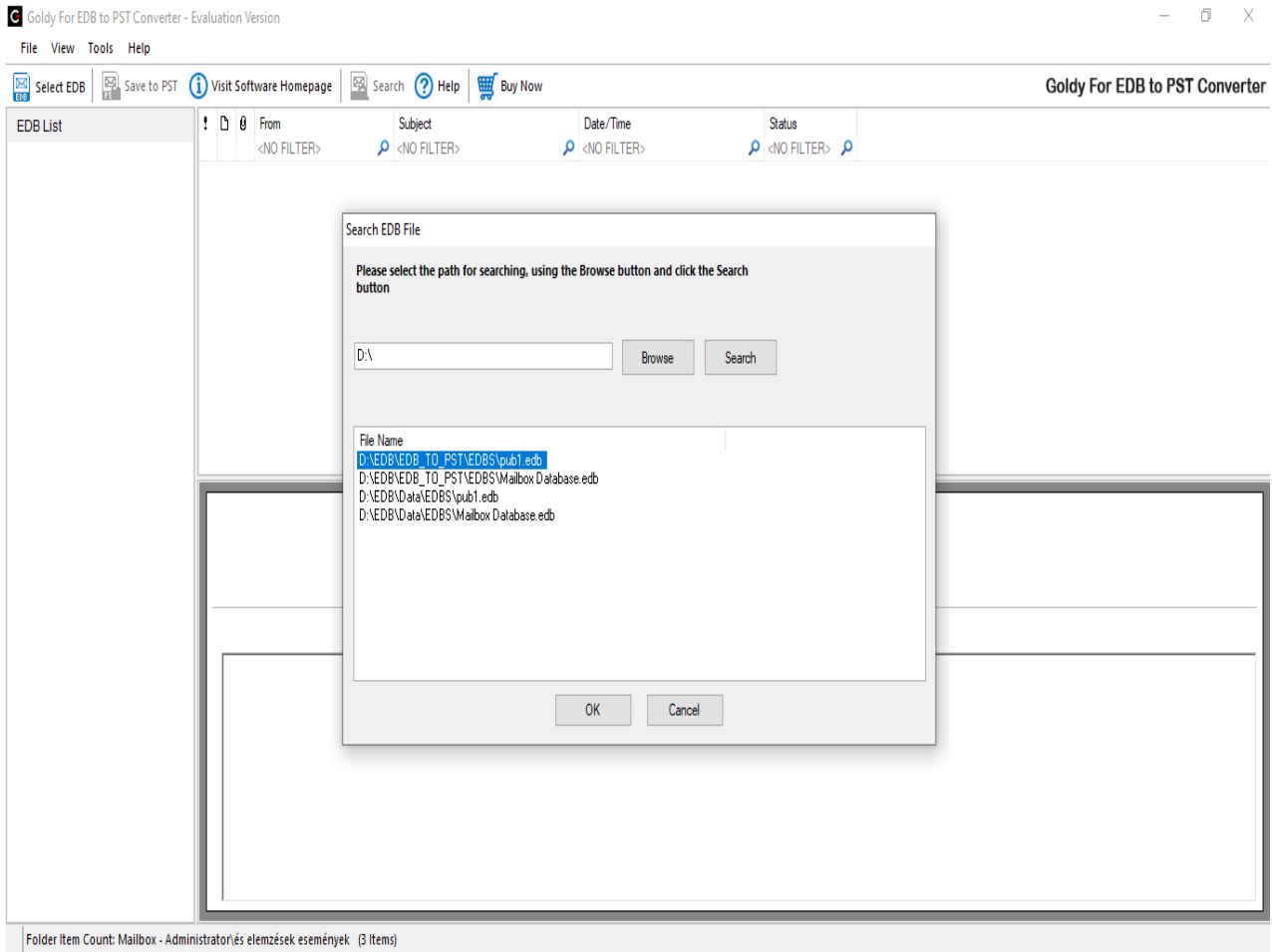


Figure 4.3 Search result

Export Mailboxes

You can export one or more mailboxes in PST format using this option. You have the option of exporting either the whole EDB's mailboxes to a new or existing PST, or just one specific mailbox.

You can export all the EDB's mailboxes in PST format with this option. A unique PST file will be exported for each mailbox in the EDB.

By default, the Mailbox name will be used for the PST file. Moreover, it is possible to just export certain mailboxes.

The actions listed below must be taken to export mailboxes from EDB:

From the Pop Up, right-click on the root folder of the EDB source and choose the option to Export Mailboxes.

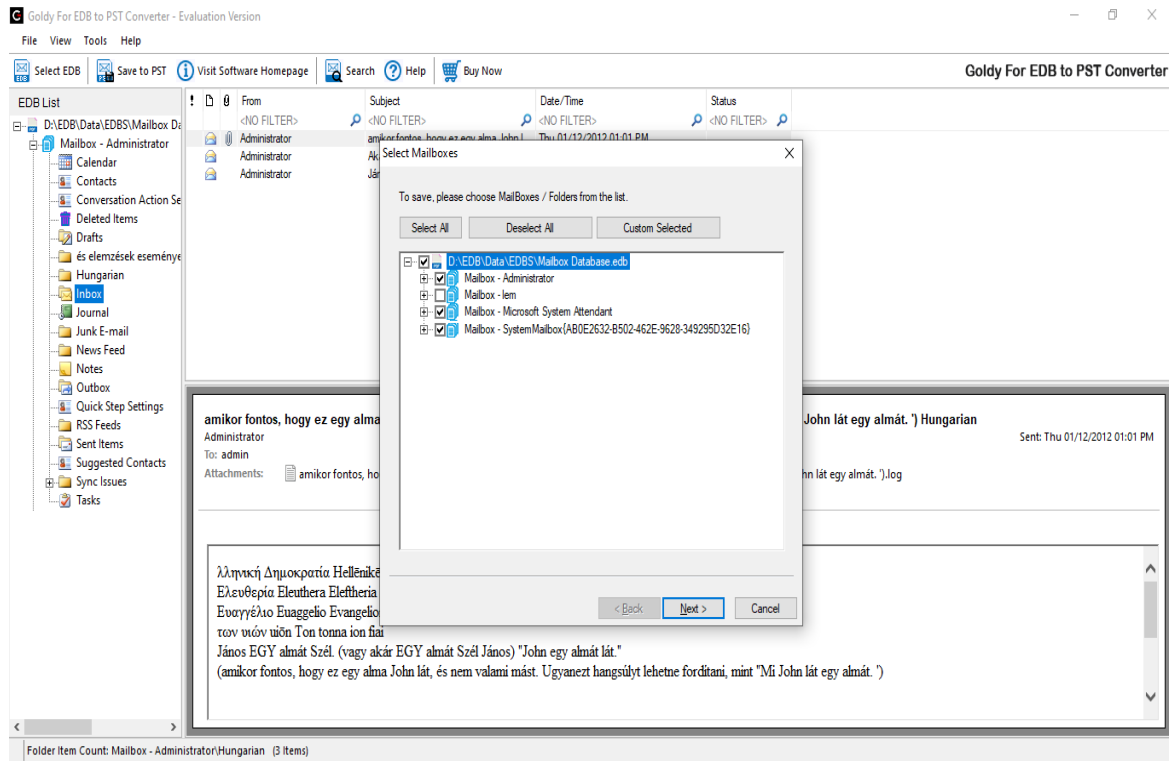


Figure 4.5

Click next button

You can choose the Item kinds and Date range of the mailbox items for exporting in the Filter dialogue box. Additionally mention the location to which PSTs will be exported. Choose Next.

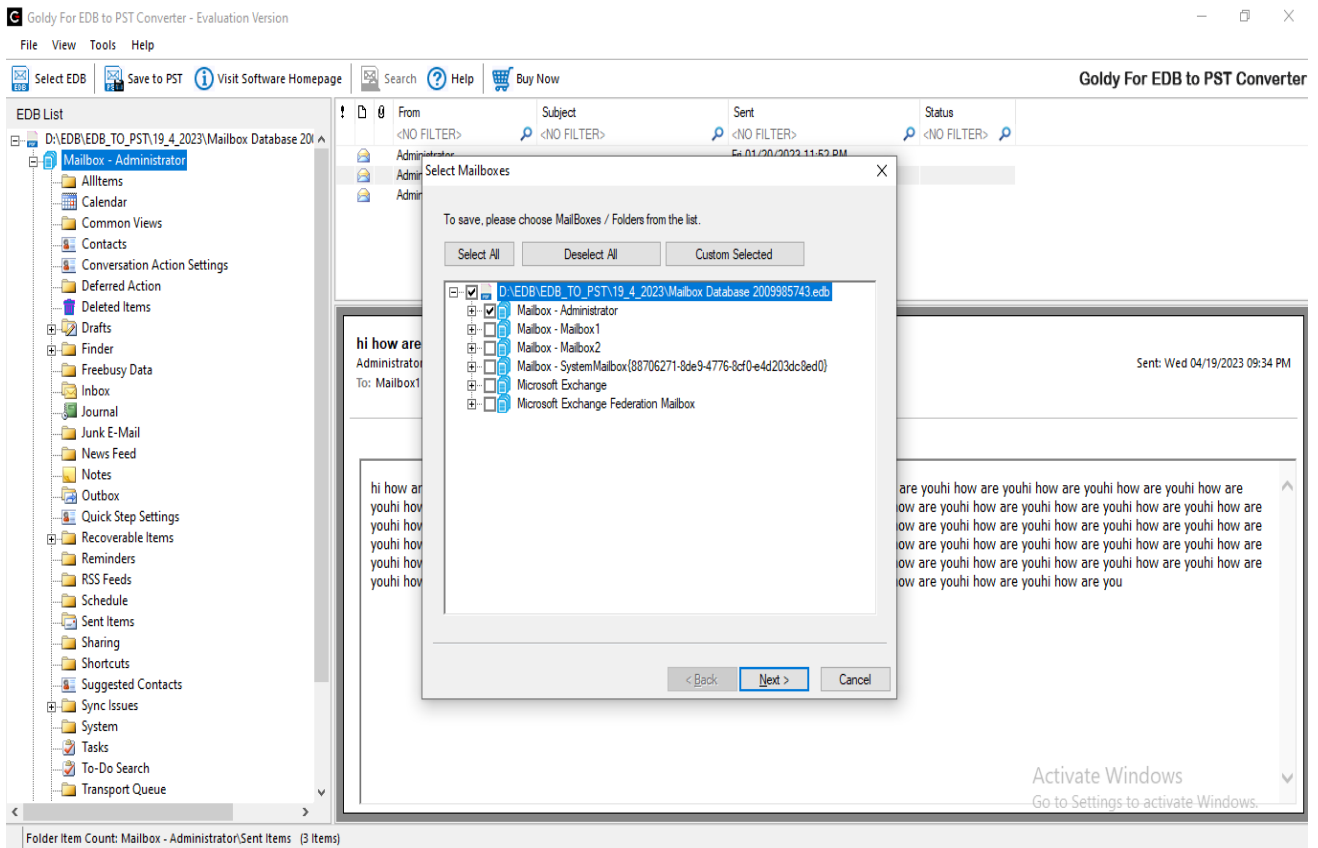


Figure 4.6

Choose the Split PST option and enter the PST size. Choose the Create Unicode PST option to build a Unicode PST. Press the next button.

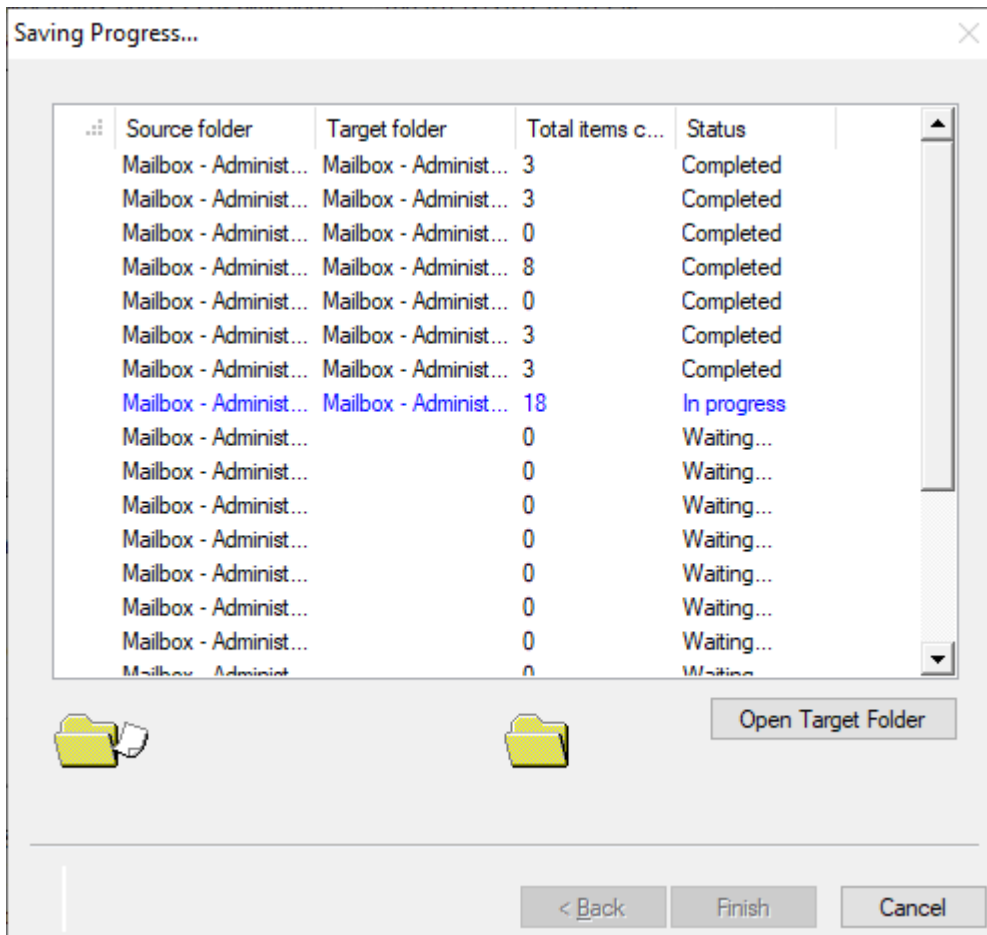


Figure 4.7

The export procedure begins, and when it is finished, a message is shown. To complete the procedure, click Ok.

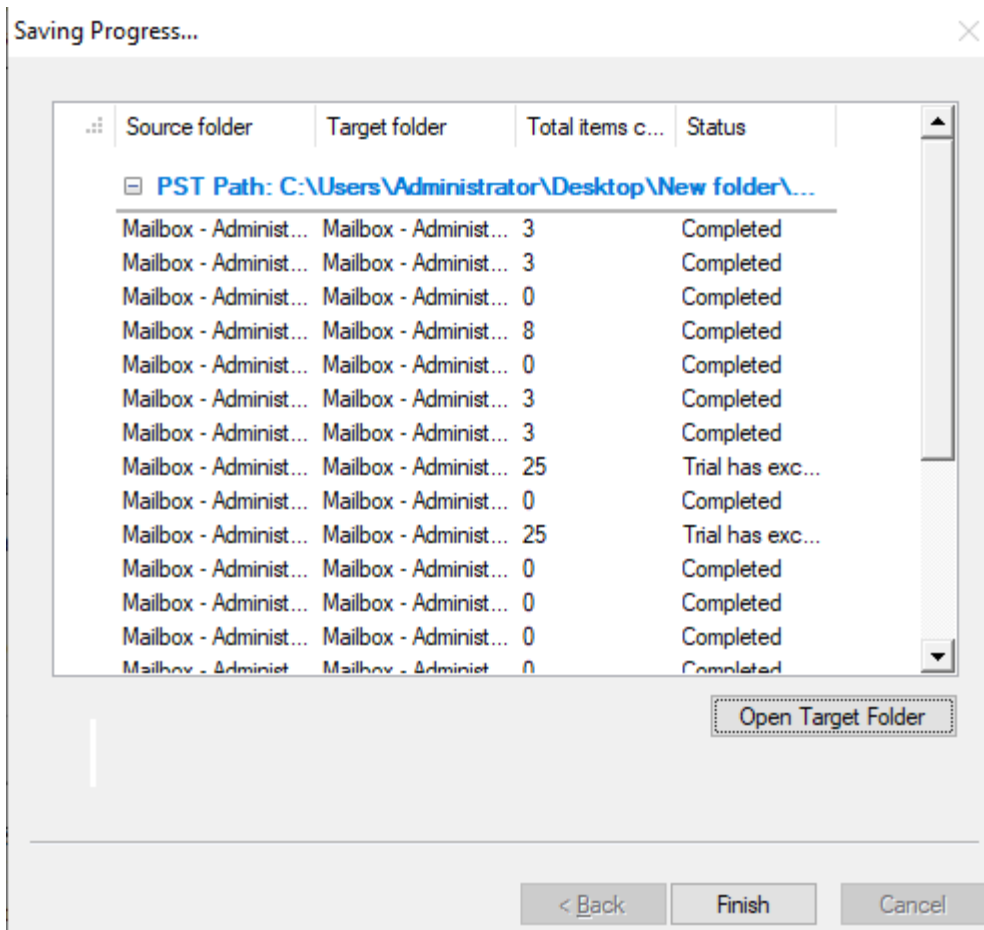


Figure 4.8

Buy the Goldy For EDB to PST Converter Software

It is advisable that you purchase the Godly for EDB to PST Converter software if you wish to save Repair emails messages.

Payment and Delivery

You can make a purchase by using a credit card. If you wish to make a purchase using some other method, then please e-mail us on support@goldytools.com

Once you have successfully purchased the licensed version, a registration key with URL to download the full version will be emailed on your registered email ID. You **can download the FULL version** of the Goldy software immediately once your order is placed and enjoy all the features.

Conclusion

This User Guide has been developed to ensure that you can easily understand how to Repair corrupt EDB. It offers helpful tips and steps so that you have a seamless experience. To know more about the product and to experience its benefits please visit

<https://www.goldytools.com/convert-edb-to-pst.php>

Support

For further support or if you wish to know more about our products then you can connect with us at <https://www.goldytools.com/Contact.html> and submit your query, or chat with one of our support team members.

Moreover, you can drop us an email by writing to us on the ID support@goldytools.com (for Support Queries)

Copyright

Goldy Software Private Limited Installation and Configuration manuals as well as associated documents are the property of Goldy Software Private Limited. The company reserves the necessary copyrights. Further, under the copyright laws, this user manual cannot be reproduced in any form without any prior written permission of Goldy Software Private Limited. No patent or any other liability with respect to the use of the information contained herein is permitted. While we have taken great care and have ensured 100% accuracy in the information that we have provided herein, however the company will not be held responsible for anything that is incorrectly mentioned or if you may find inappropriate.

Copyright © 2023 by Goldy Software Pvt Ltd. All rights reserved